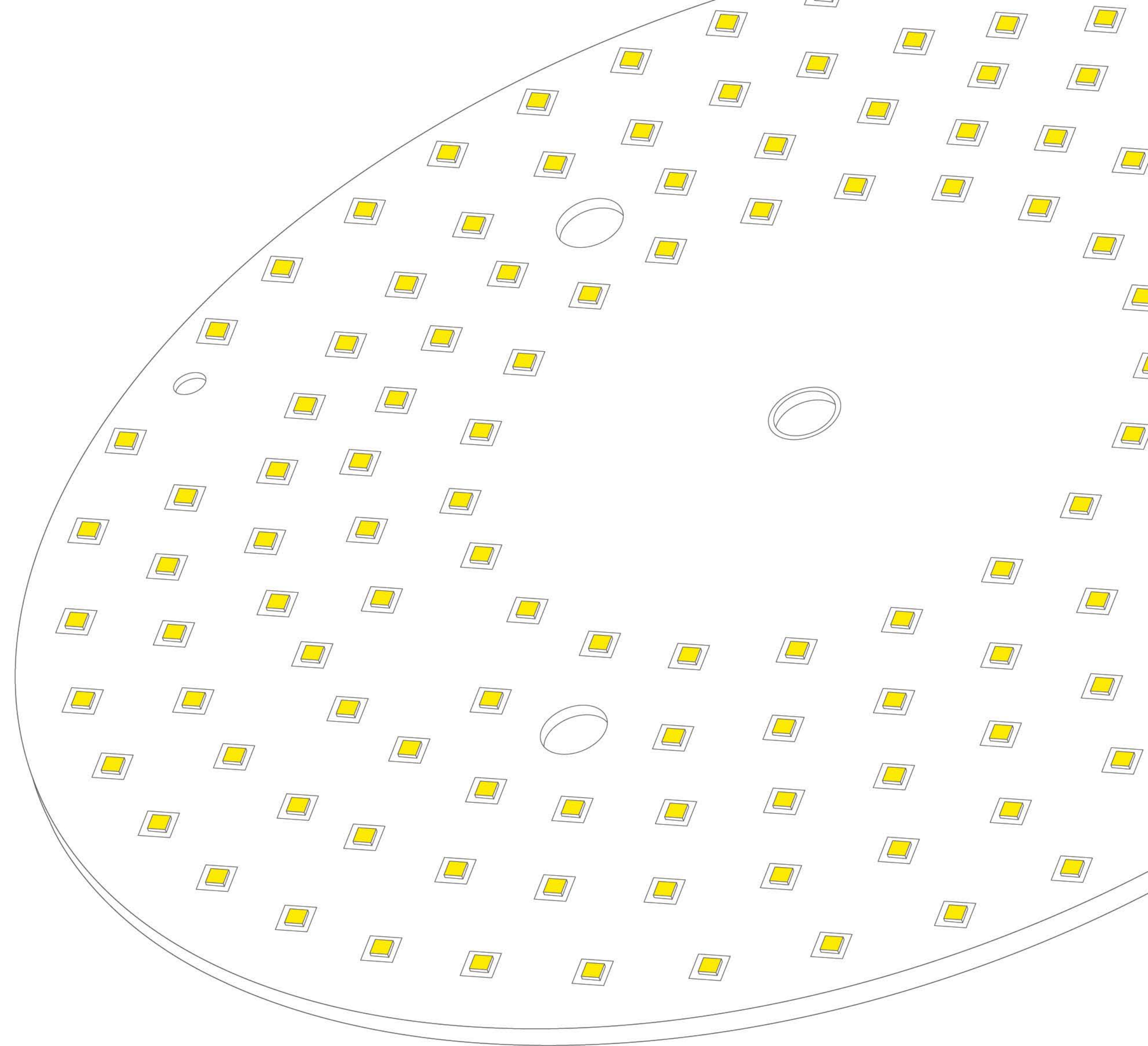


General Lighting | Module

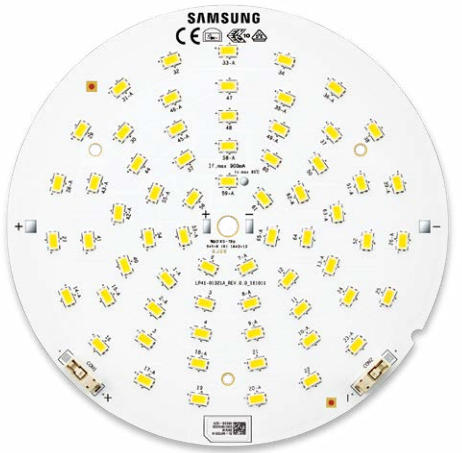
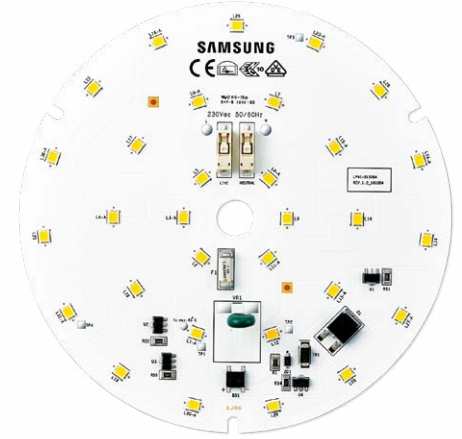
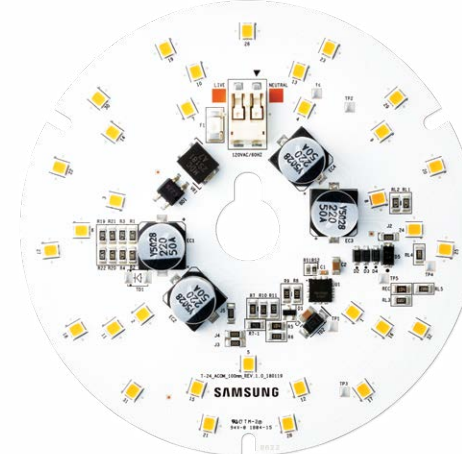
Down Light



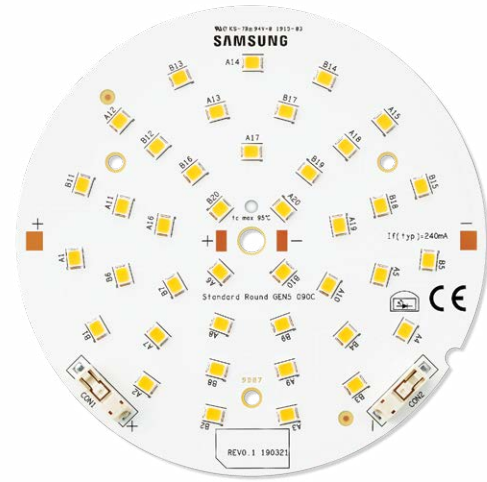


High efficacy modules that are ideal for use in downlights and spotlights

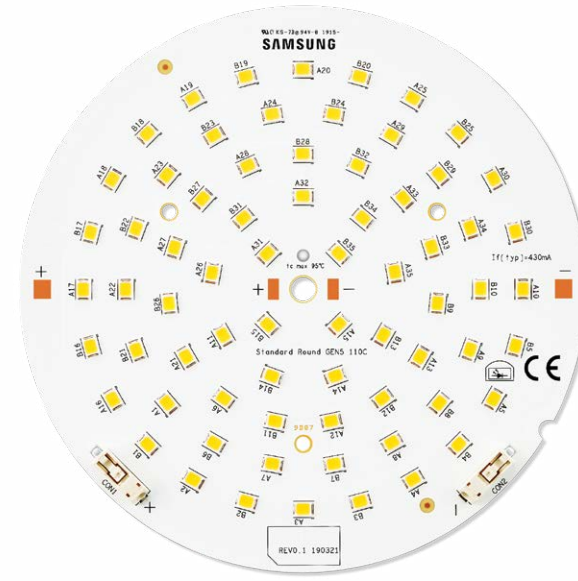
- High efficacy downlight modules with latest LED technology from Samsung
- Suitable for various applications including general flood light, spotlight, ceiling light, flushmount and fan light
- Best color consistency derived from Samsung's extensive binning expertise

Product	Key Features	Efficacy (lm/W)	Lifespan
	<p>Circular Module G5 (Round Gen 5)</p>	<ul style="list-style-type: none"> • High luminous efficacy for reduced electricity costs • Possible to design 4-8inch downlight • Lifetime: 50,000 hours, Beam angle: 115° 	<p>●●●●● ○</p>
	<p>Circular Engine 120mm G2 (Round ACOM Gen 2)</p>	<ul style="list-style-type: none"> • Easy installation (No external driver required) • Cost competitive with good lm/\$ • Lifetime: 50,000 hours, Beam angle: 115° 	<p>●●●●○ ○</p>
	<p>Circular Engine 100mm (T-24 ACOM)</p>	<ul style="list-style-type: none"> • Flicker-free(%Flicker < 30%), Dimming to 10% brightness with good dimmer compatibility • Designed following CEC Title-24 standard • Lifetime: 50,000 hours, Beam angle: 115° 	<p>●●●○ ○</p>

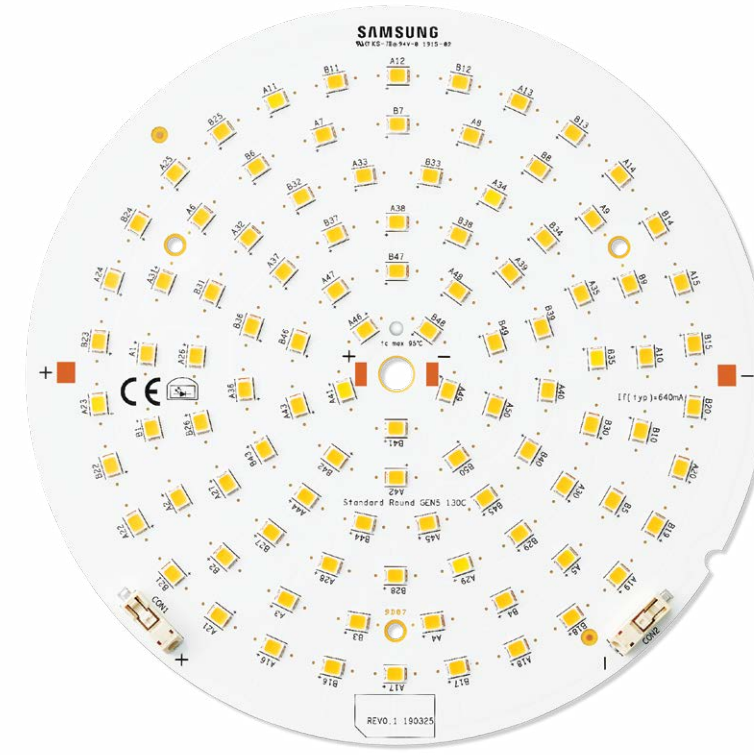
Circular Module G5 (Round Gen 5)



CM 90mm 1000lm G5



CM 110mm 2000lm G5



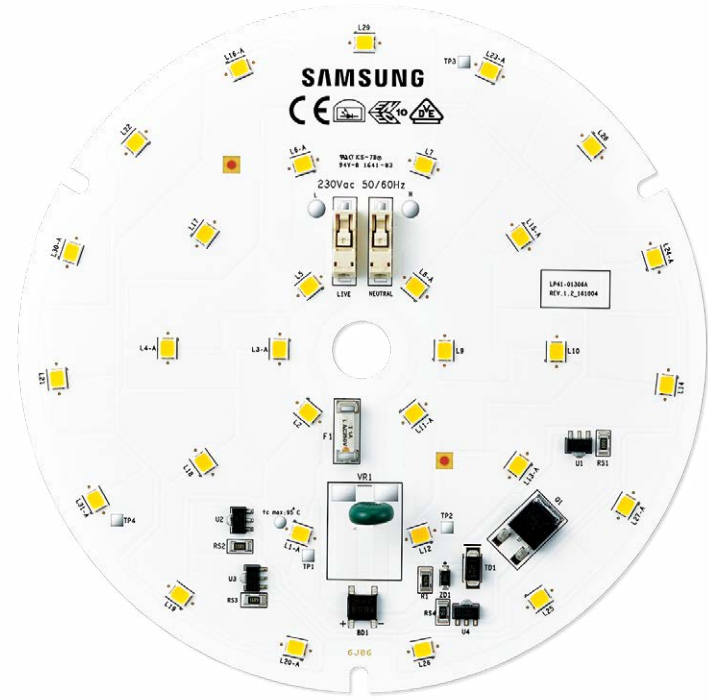
CM 130mm 3000lm G5

Type	Luminous Flux (lm)	Power Consumption (W)	Input Voltage (V)	IF (mA)	I _{max} (mA)	Efficacy (lm/W)	T _p (°C)	CRI	CCT (K)	Size (mm)	Temperature Range (°C)	Certification	Model Name
CM 90mm 1000lm 830 G5 (Round-090)	1190	6.7	27.5	240	480	178	25	80+	3000	Φ90x5.2	-20~+50	UL	SI-N8V0754B0WW
CM 90mm 1000lm 835 G5 (Round-090)	1210					181			3500				SI-N8U0754B0WW
CM 90mm 1200lm 840 G5 (Round-090)	1240					186			4000				SI-N8T0754B0WW
CM 90mm 1000lm 850 G5 (Round-090)	1250					187			5000				SI-N8R0754B0WW
CM 90mm 1000lm 857 G5 (Round-090)	1250					187			5700				SI-N8Q0754B0WW

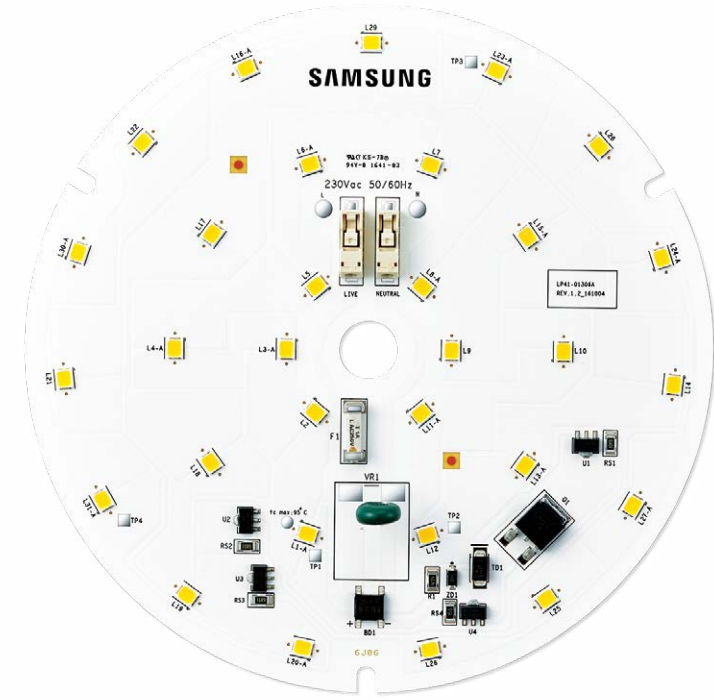
Circular Module G5 (Round Gen 5)

Type	Luminous Flux (lm)	Power Consumption (W)	Input Voltage (V)	IF (mA)	I _{max} (mA)	Efficacy (lm/W)	T _p (°C)	CRI	CCT (K)	Size (mm)	Temperature Range (°C)	Certification	Model Name
CM 110mm 2000lm 830 G5 (Round-110)	2130	12	27.8	430	840	178	25	80+	3000	Φ110x5.2	-20~+50	UL	SI-N8V1254B0WW
CM 110mm 2000lm 835 G5 (Round-110)	2150					180			3500				SI-N8U1254B0WW
CM 110mm 2000lm 840 G5 (Round-110)	2210					185			4000				SI-N8T1254B0WW
CM 110mm 2000lm 850 G5 (Round-110)	2240					187			5000				SI-N8R1254B0WW
CM 110mm 2000lm 857 G5 (Round-110)	2230					186			5700				SI-N8Q1254B0WW
CM 130mm 3000lm 830 G5 (Round-130)	3170	17.9	27.9	640	1200	178	25	80+	3000	Φ130x5.2	-20~+50	UL	SI-N8V1856B0WW
CM 130mm 3000lm 835 G5 (Round-130)	3210					180			3500				SI-N8U1856B0WW
CM 130mm 3000lm 840 G5 (Round-130)	3310					185			4000				SI-N8T1856B0WW
CM 130mm 3000lm 850 G5 (Round-130)	3350					188			5000				SI-N8R1856B0WW
CM 130mm 3000lm 857 G5 (Round-130)	3330					186			5700				SI-N8Q1856B0WW

Circular Engine 120mm G2 (Round ACOM Gen 2)



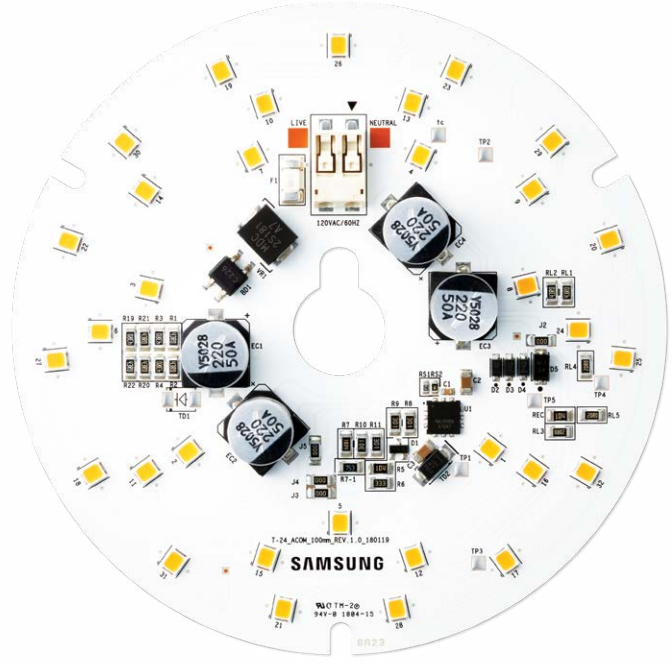
CE 120mm 1400lm EU G2



CE 120mm 1400lm KR

Type	Luminous Flux (lm)	Power Consumption (W)	Input Voltage (V)	Flicker (%)	I _{max} (mA)	Efficacy (lm/W)	T _p (°C)	CRI	CCT (K)	Size (mm)	Temperature Range (°C)	Certification	Model Name
CE 120mm 1400lm 827 G2 (Round ACOM EU Gen 2)	1430	12.1	230(AC)	100	15	118	25	80+	2700	Φ120x5.5	-20~+40	CE, ENEC	SI-N8W1225B1EU
CE 120mm 1400lm 830 G2 (Round ACOM EU Gen 2)	1440					119			3000				SI-N8V1225B1EU
CE 120mm 1400lm 840 G2 (Round ACOM EU Gen 2)	1550					128			4000				SI-N8T1225B1EU
CE 120mm 1400lm 857 (Round ACOM KR)	1460	11.2	220(AC)	100	18	130	25	80+	5700	Φ120x5.5	-20~+40	-	SI-N8Q1115B1KR

Circular Engine 100mm (T-24 ACOM)



CE 100mm 1500lm (T-24 ACOM)

Type	Luminous Flux (lm)	Power Consumption (W)	Input Voltage (V)	Flicker (%)	I _{max} (mA)	Efficacy (lm/W)	T _p (°C)	CRI	CCT (K)	Size (mm)	Temperature Range (°C)	Certification	Model Name
CE 100mm 1500lm 927 (T-24 ACOM)	1530	16.2	120(AC)	< 30	11	94	25	90+	2700	Φ100x11	-20~+40	cUL, UL, T24	SI-N9W1624B1US
CE 100mm 1500lm 930 (T-24 ACOM)	1540					95			3000				SI-N9V1624B1US
CE 100mm 1500lm 935 (T-24 ACOM)	1600					99			3500				SI-N9U1624B1US
CE 100mm 1500lm 940 (T-24 ACOM)	1620					100			4000				SI-N9T1624B1US